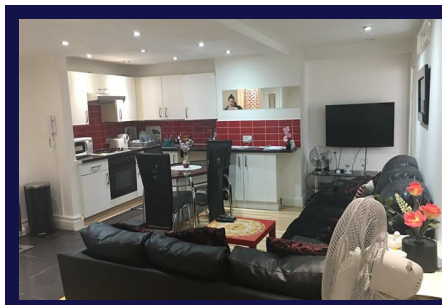


## Edgware Road, London, W2 2QR



### Features:

- **2 bedroom Flat**
- **Secured Flat**
- **Lifts**
- **Fully Fitted Kitchen**
- **Bath**
- **Prime Location**
- **Minutes Hyde Park**
- **Close to Transport Links**
- **Minutes to Edgware Station**
- **Close to Marble Arch**

### Description:

Located within a period mansion block, this superb two bedroom flat features a spacious reception room with an open plan kitchen and is ideally located near the green open spaces of Hyde Park. Added benefits include lifts and secured entry system.

The property would make a perfect rental investment or pied-à-terre. Park West is brilliantly located just a short walk from Marble Arch tube station, Edgware Road, Paddington, Oxford Street and the open spaces of Hyde Park are close by.

548 sq f

**Offers In Excess Of £499,999**