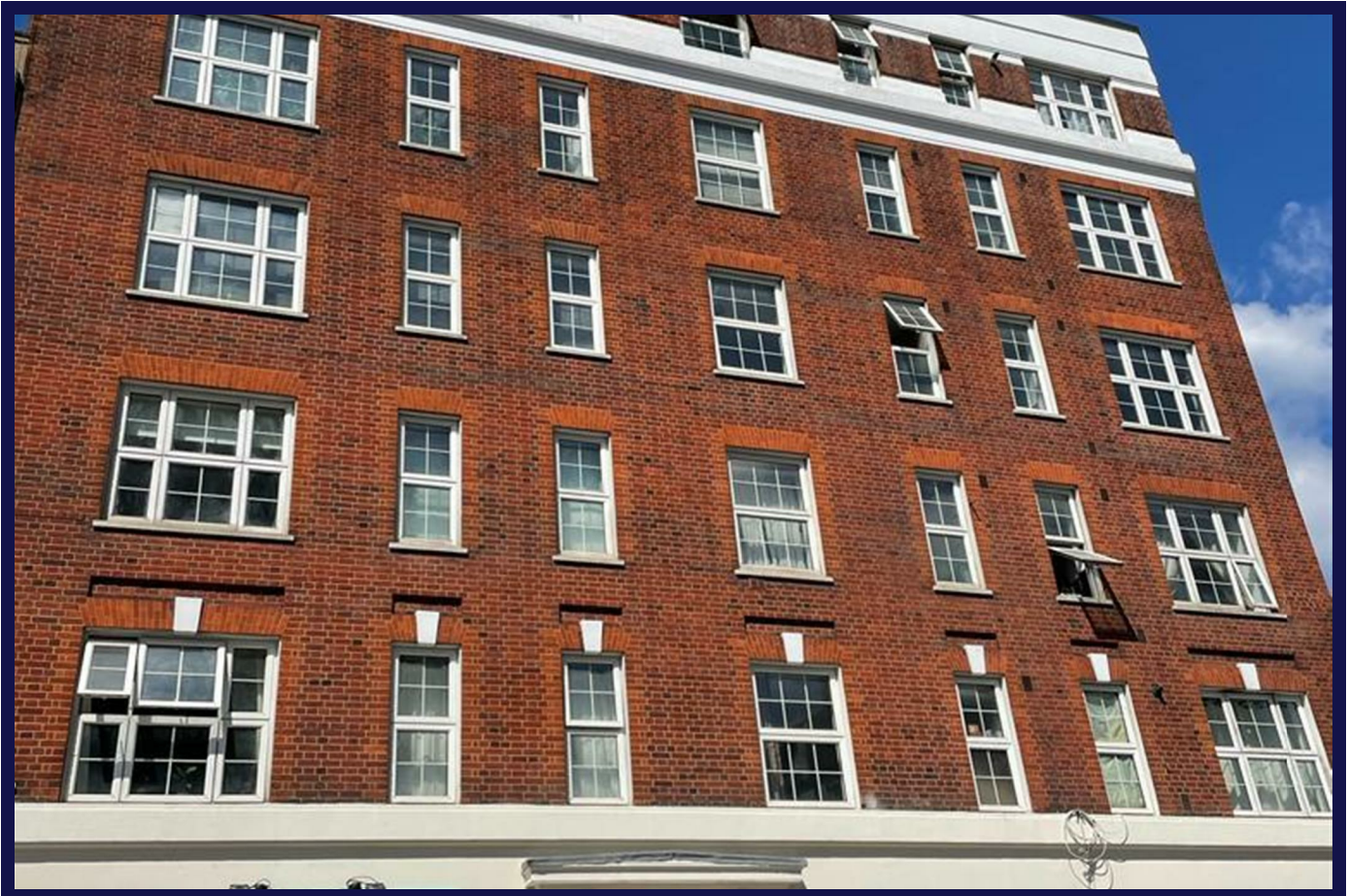


## Sussex Gardens, London, W2 1EU



### Features:

- **1 bedroom Flat Centrally Located**
- **Ideal for buy to let or First time Buyer**
- **154 years remaining on Lease**
- **443 Sq feet**
- **Purpose Built block on Sussex Gardens**
- **5 minute walk to Edgware Road and Paddington Stations**
- **Close Proximity to Hyde Park Gardens**

### Description:

Foundation Estates offers you an opportunity to invest - this bright and well proportioned one bedroom apartment situated in a secure purpose built block in Sussex Gardens is available now.

Situated on the first floor over 443 sqft (42 sqm) approx, it comprises of a separate kitchen, good sized reception with dining, a double bedroom, a bathroom and a hallway. The property benefits of a long lease - 154 years remaining on lease.

The flat requires some modernization.

Ideally located moments away from Paddington, Marble Arch & Edgware Road stations with excellent transport links to the City and The West End. The green open spaces of Hyde Park are within 10 min walk and a stone throw from the hustle and bustle of Edgware Road

This would make an Ideal first time buy or buy to let property. Leasehold, 154 years remaining approx.

View Now...Dont Miss an opportunity

**Guide Price £475,000**