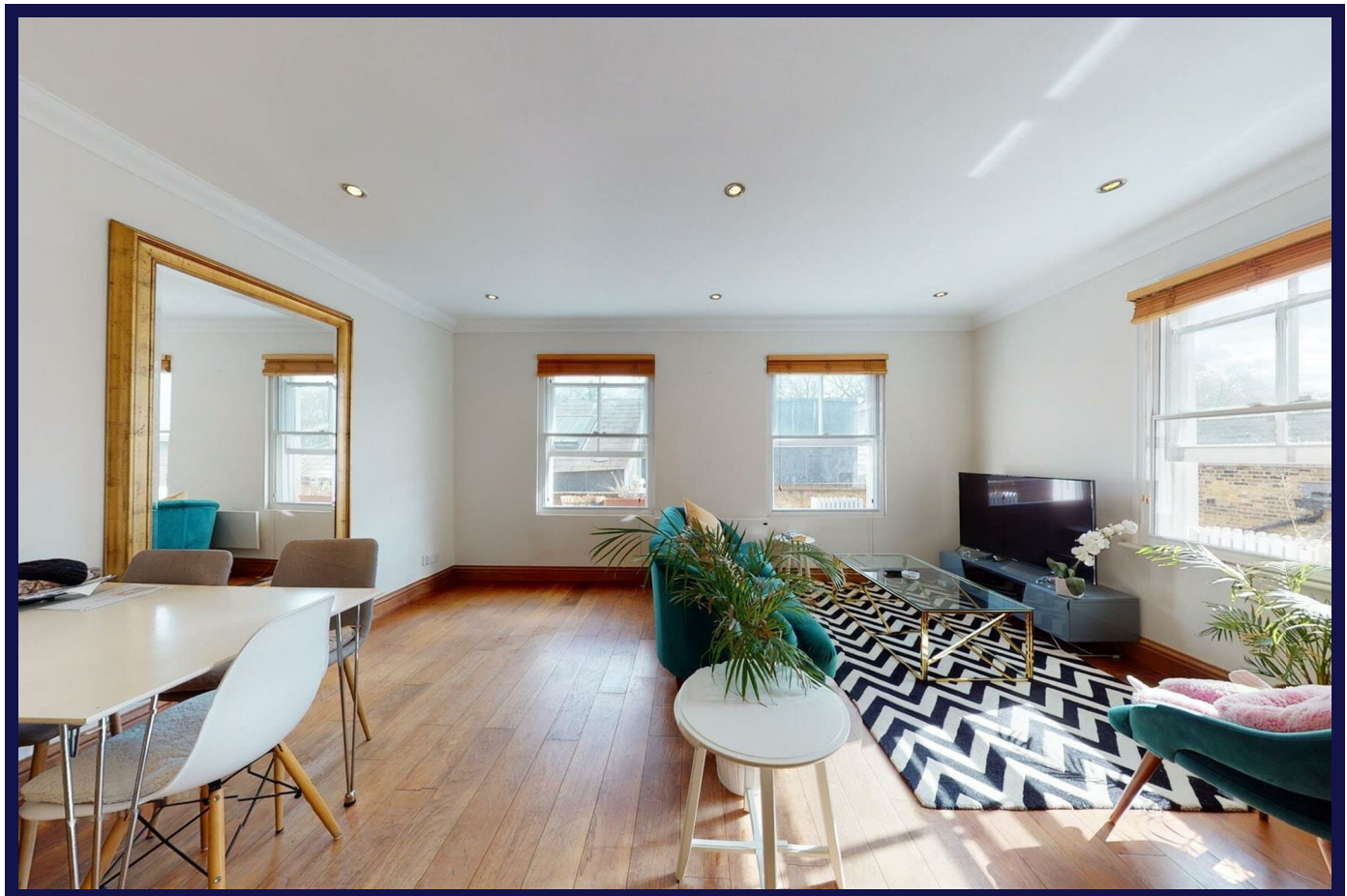


Kings Road, Chelsea, SW3 5EL



Features:

- **One Bedroom Flat**
- **Modern Kitchen**
- **New Decorated Bathroom**
- **Fully Furnished**
- **Wooden Flooring**
- **Ample storage**
- **Just a minutes walk from the hustle and bustle of Kings Road**
- **Available now**

Description:

Presenting a stunning flat to rent Kings Road this flat comprises 1 bedroom and 1 bathroom. Available from 01/06/2023, covering 590 sq. ft. in living space and situated on the second floor, this modern property is currently furnished and comes with big windows and high ceilings. The property also benefits from spacious rooms and is naturally lit throughout. Further features and amenities include: - Open plan kitchen with dishwasher - Freezer - Washer/Dryer The flat has a current EPC rating of E and is under Council Tax band E. Near the vast selection of local amenities, the property is located only moments away from Sloane Square and Gloucester Road Tube station.

EPC Rating: E

£2,275 PCM