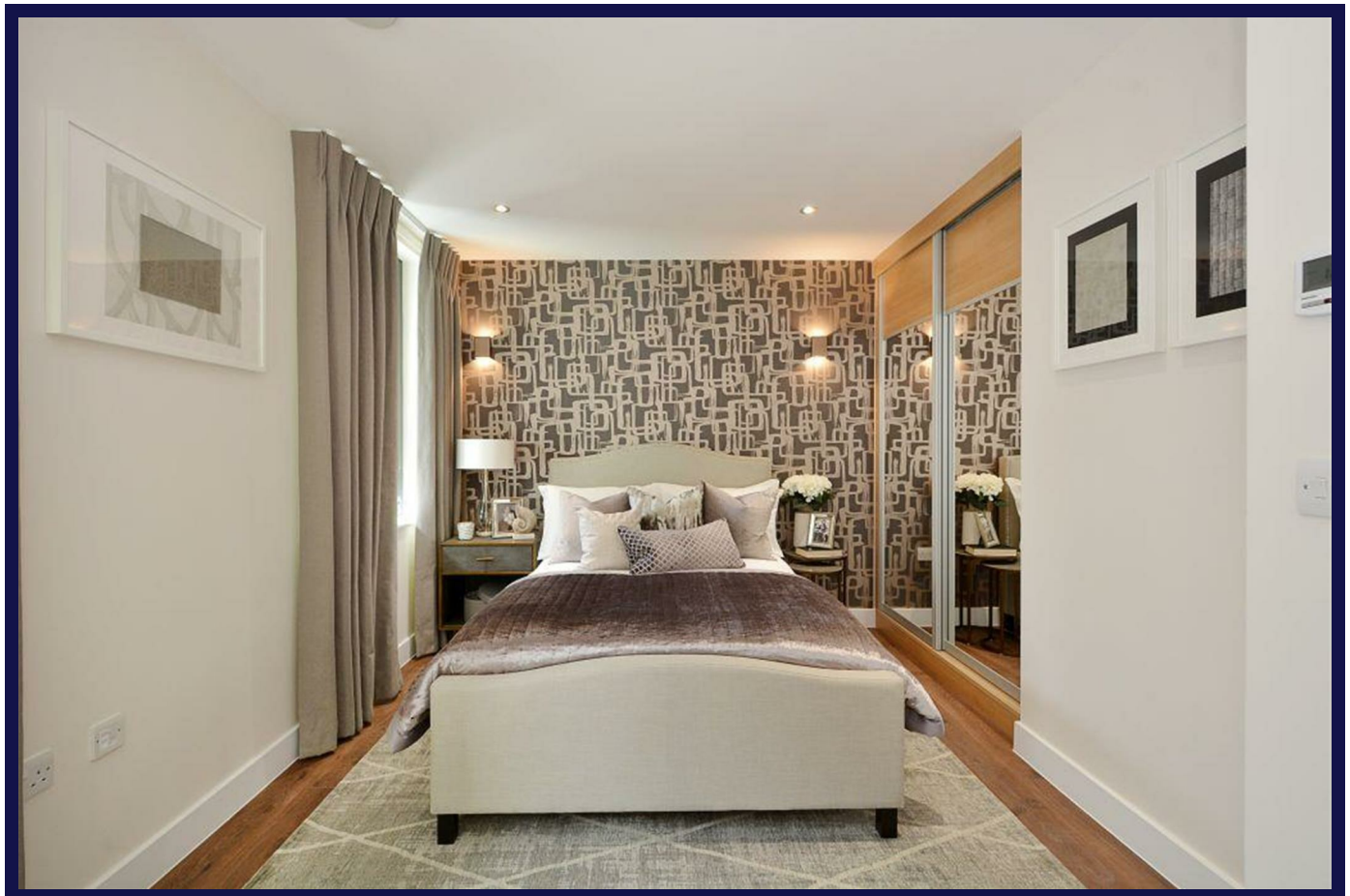


Back Church Lane, London, E1 1FL



Features:

Description:

Presenting a newly-built flat to rent in Whitechapel. The property is on Back Church Lane and comprises 1 bedroom and 1 bathroom. Available from the 15th of August 2022, covering 600 sq. ft. in living space and situated on the third floor with a lift, this modern property is currently furnished and comes with big windows and ample storage. The property also benefits from a private balcony, wood floors and abundant natural light throughout, as well as a concierge. Further features and amenities include:

- Open plan kitchen with dishwasher
- Freezer
- Washer/Dryer
- Student-friendly

The flat has a current EPC rating of B and is under the Council Tax band E. Located on a quiet street and close to local amenities, the property is located only moments away from Aldgate East and Whitechapel tube station.

£550 Per Week