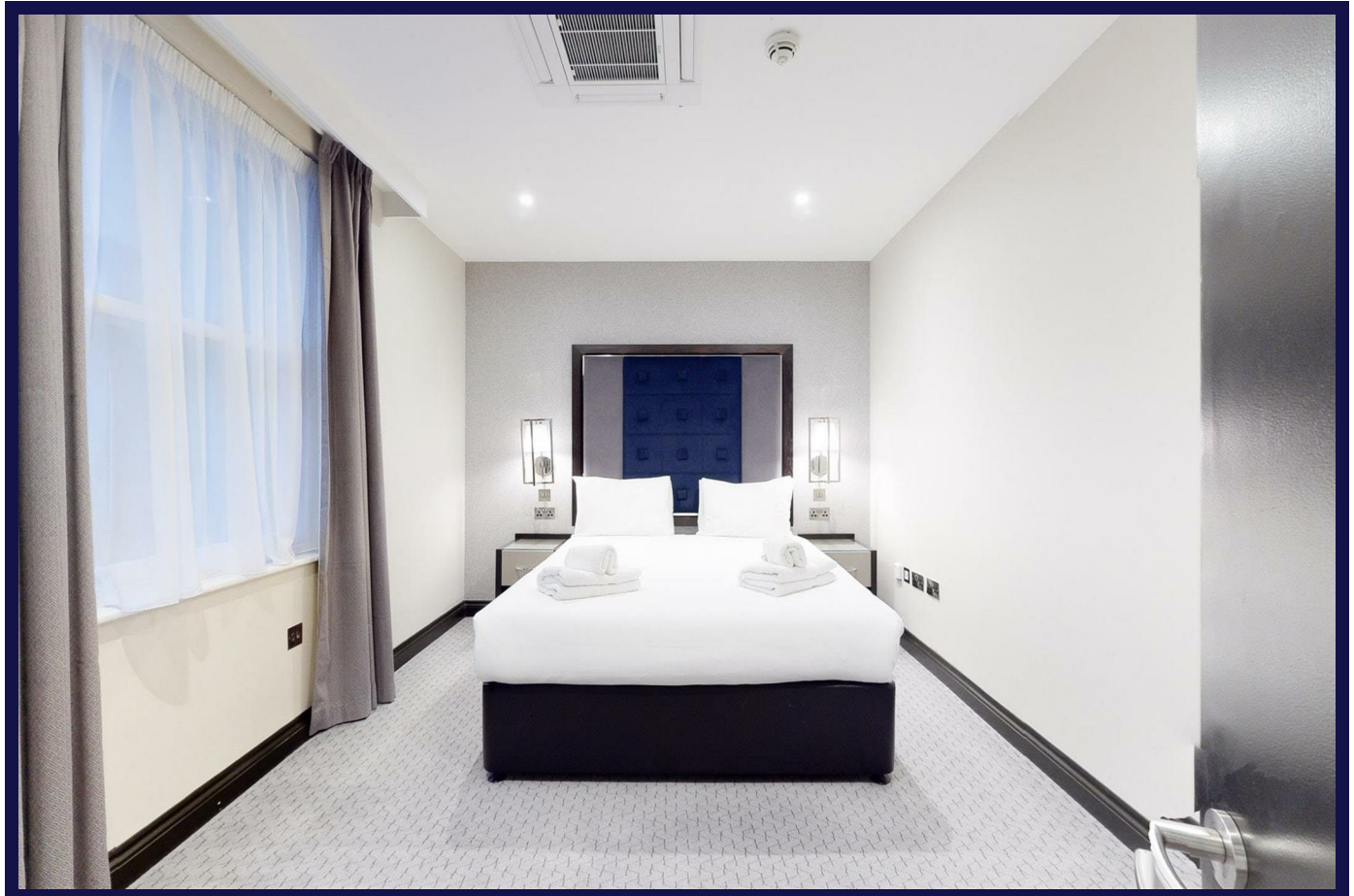


Gloucester Terrace, London, W2 3DH



Features:

- **Modern Studio Flat**
- **Fully furnished with all modcons**
- **Close proximity to Paddington and Lancaster Gate Station**
- **5 minutes to Hyde Park**
- **close to all amenities**
- **279**

Description:

Foundation Estates is happy to offer you modern, new and spacious ground floor Double studio flat in this period conversion property in Gloucester Terrace, London, W2

The property consists of:

- * Fully furnished large studio
- * Lots of storage, washing machine, amazingly quiet building in the heart of W2
- * Modern finishes

3 minutes walk from Lancaster Gate station and Hyde Park, Paddington is 5 minutes' walk, with Edgware Road, Oxford Street and Queensway nearby

*Water and Wifi Included except Electricity and Council tax

Available for immediate occupation

£2,300 PCM