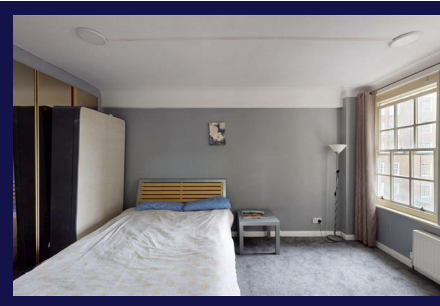


Edgware Road, London, W2 2QN



Features:

- **Spacious 1 Bedroom apartment**
- **24/7 security/porter service**
- **moments walk from all amenities**
- **easy access to all transport links**
- **Walking distance to hyde park/oxford street/Marylebone**
- **Spacious living room**
- **5th floor with elevator**

Description:

This spacious one bedroom apartment is located on the 5th floor of a well maintained building, which includes a 24/7 portered service and elevator.

The apartment is 58 square meters/ 624 square feet.

It is situated on the much sought after edgware road, being a 5 mins walk from edgware road underground station.

The property is walking distance to Hyde park, Marylebone, Paddington and Oxford Street.

The property has easy access to transport links to all parts of london, including the elizabeth line, bakerloo line, hammersmith and city line, district and circle lines and national rail.

Additional Information

Lease Years Remaining: 78
Annual Service Charge: £4000
Council Tax band: E
Ground Rent Amount: £200.00

Asking Price £389,000