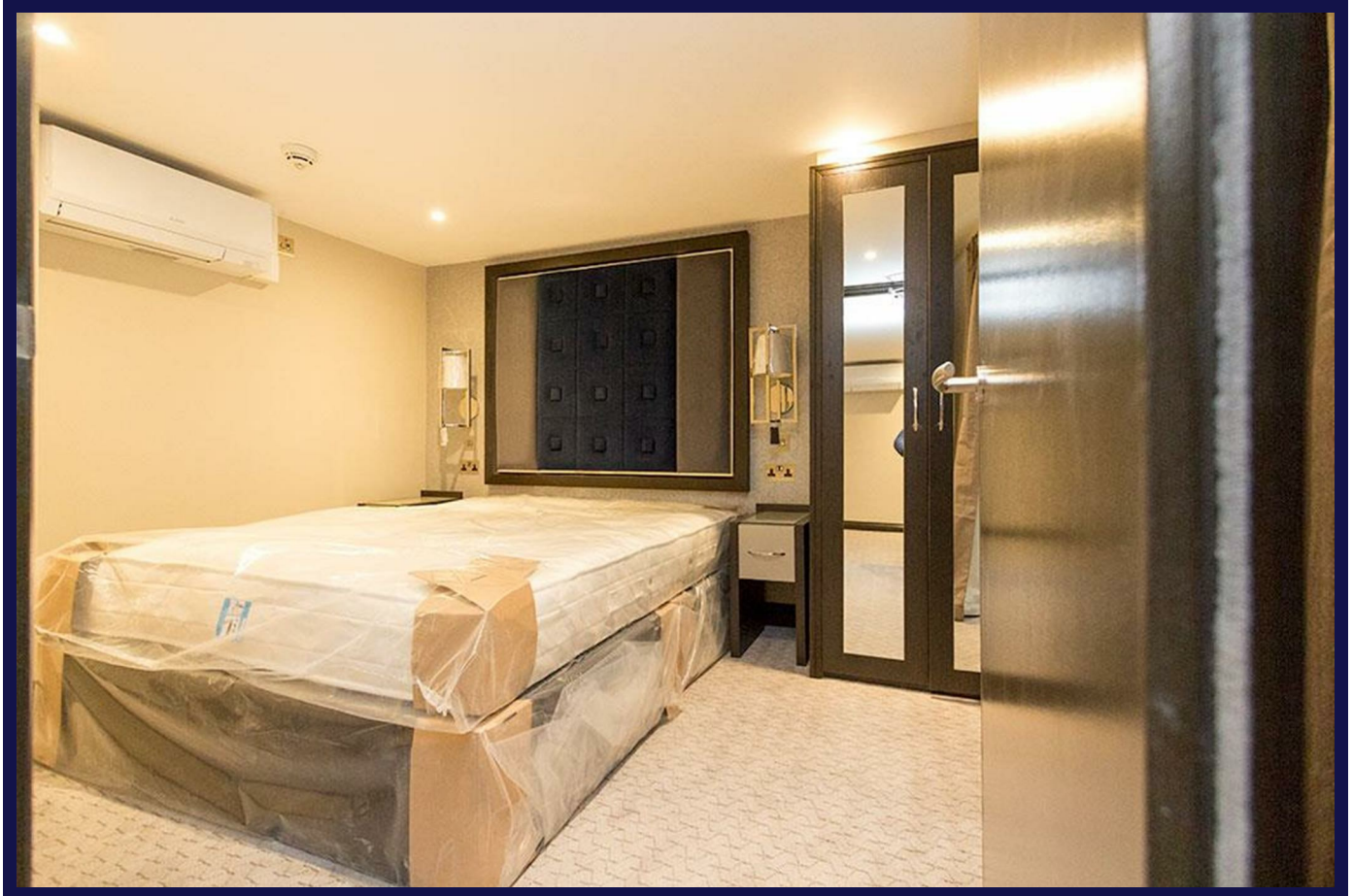


Gloucester Terrace, London, W2 3DH



Features:

- **Fully Furnished 1 bed Flat**
- **Modern Finishes**
- **Close proximity to all amenities**
- **Walking distance to paddington and Lancaster Gate Stations**
- **Private Patio**
- **5 mts from Hyde Park Gardens**

Description:

This modern, new and spacious one bedroom flat is in a period conversion property on Gloucester Terrace, Lancaster Gate, London, W2

The property consists of:

- * Fully furnished 1 bed Flat
- * Lots of storage, washing machine, amazingly quiet building in the heart Lancaster gate
- * Modern finishes with private patio

3 minutes walk from Lancaster Gate station and Hyde Park, Paddington is 5 minutes' walk, with Edgware Road, Oxford Street and Queensway nearby
All Bills included except Electricity

£2,300 PCM